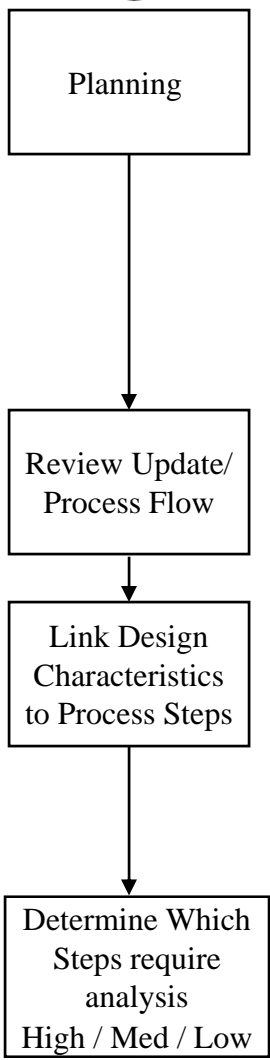


# Developing an Efficient Process FMEA

1

## Planning For FMEA

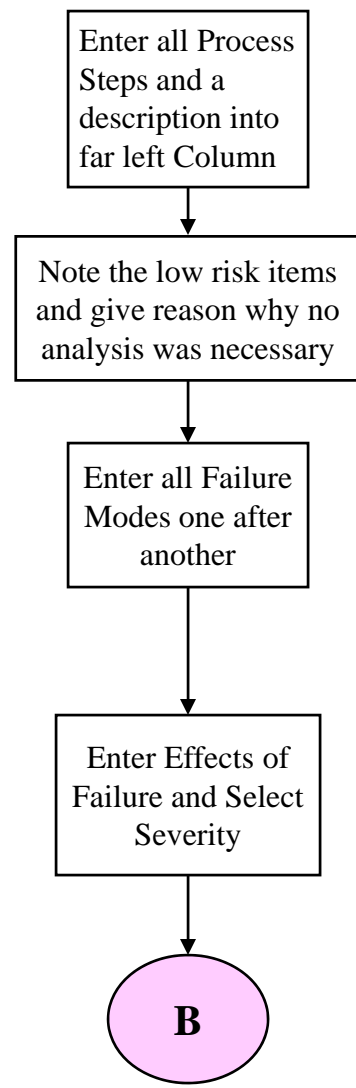


- Gather:**
- Design Input Special Characteristics
  - Surrogate Process Flow
  - Team :
    - ✓ Process Owner
    - ✓ Design Representative
    - ✓ PVT-Problem Data Person
    - ✓ Supplier
    - ✓ Process Contraries
  - Process Flow Diagram
  - Characteristics linked to Customer Satisfaction
  - What Operations affect these Characteristics

- Medium:**
- New Technology
  - Past Concerns
  - Design Characteristics Affected
- High:**
- Safety to Operator
  - Safety in Use
  - Regulatory Requirement

2

## FMEA Development



**Note:**

- If on paper leave plenty of space for further analysis

- Types of Failures:**
- Characteristics from Matrix (if applicable)
  - Full Failure
  - Partial
  - Intermittent
  - Unintended

- List up to 5 in the same box (grouped) per each failure mode
- Place severity # beside each effect in parenthesis ex: (4)
- Place largest severity of the group into severity column

**Refer to Severity Chart for Scale**

# Developing an Efficient Process FMEA

