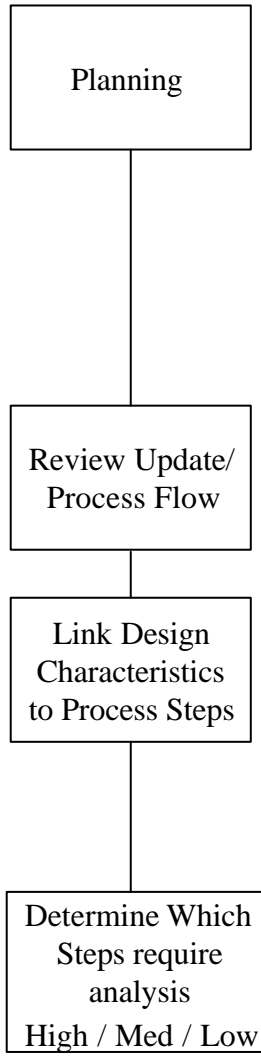


# Developing an Efficient Process FMEA

1

## Planning For FMEA

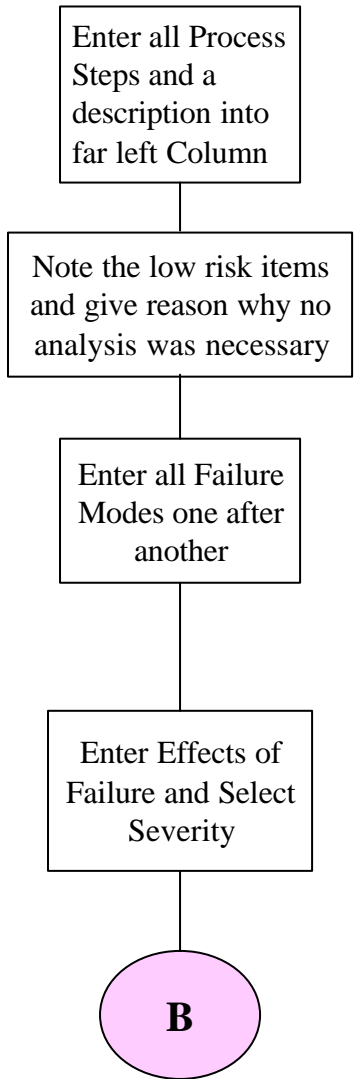


- Gather:**
- Design Input Special Characteristics
  - Surrogate Process Flow
  - Team :
    - ✓ Process Owner
    - ✓ Design Representative
    - ✓ PVT-Problem Data Person
    - ✓ Supplier
    - ✓ Process Contraries
  - Process Flow Diagram
  - Characteristics linked to Customer Satisfaction
  - What Operations affect these Characteristics

- Medium:**
- New Technology
  - Past Concerns
  - Design Characteristics Affected
- High:**
- Safety to Operator
  - Safety in Use
  - Regulatory Requirement

2

## FMEA Development



**Note:**

- If on paper leave plenty of space for further analysis

- Types of Failures:**
- Characteristics from Matrix (if applicable)
  - Full Failure
  - Partial
  - Intermittent
  - Unintended

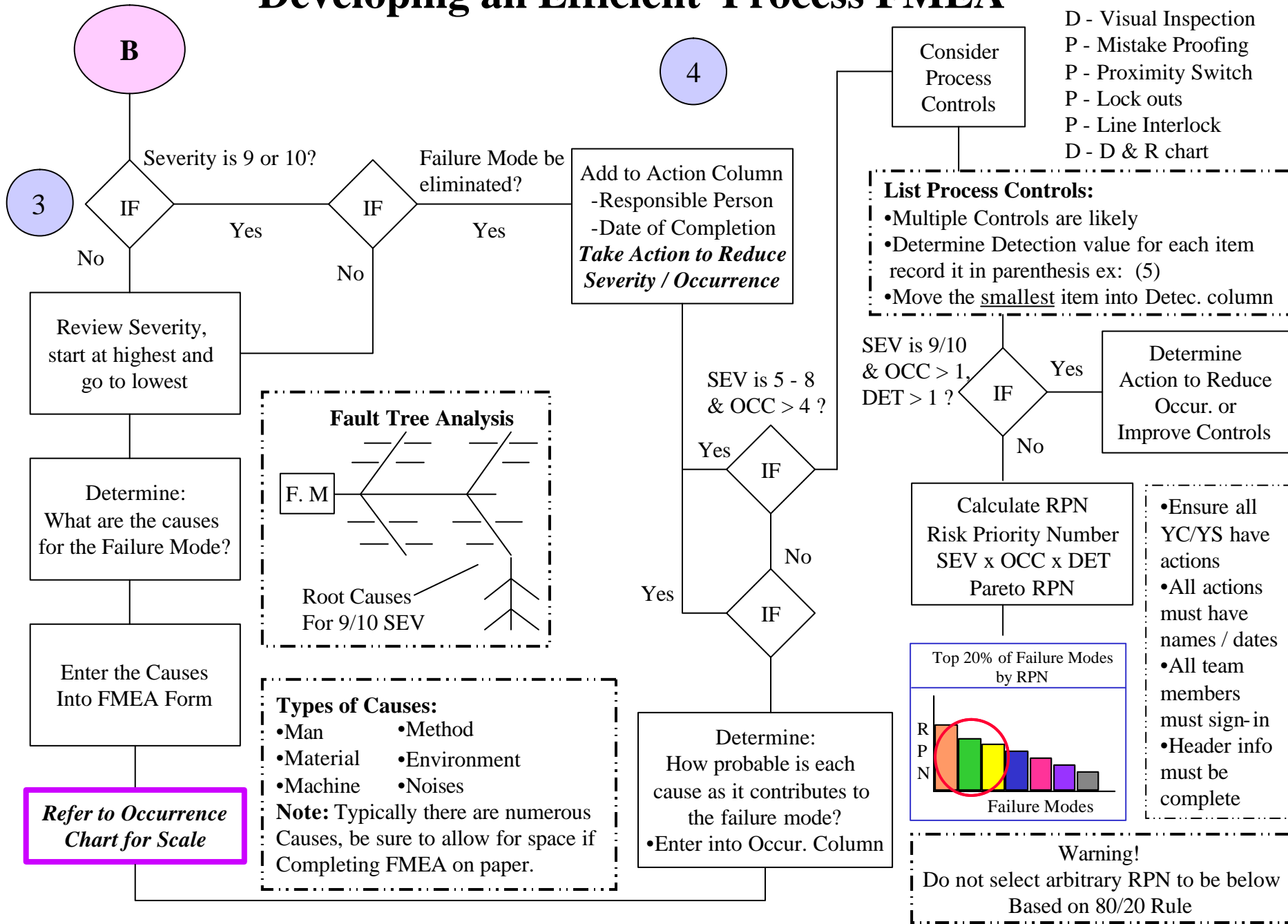
- List up to 5 in the same box (grouped) per each failure mode
- Place severity # beside each effect in parenthesis ex: (4)
- Place largest severity of the group into severity column

**• Refer to Severity Chart for Scale**

# Developing an Efficient Process FMEA

## Detection/Prevention

- D - Visual Inspection
- P - Mistake Proofing
- P - Proximity Switch
- P - Lock outs
- P - Line Interlock
- D - D & R chart



## Special Offer

Thank you for visiting our Web site

**10%**  
**OFF**



**QUALITY-ONE.com**

As a special thanks we are offering **10% off** on one of our On-site Seminar Classes or CBTs.

To get this remarkable value contact: [sale@quality-one.com](mailto:sale@quality-one.com)

Phone: **1-313-565-6266**

Fax this page with the information below filled in and receive 10% discount on a upcoming class.

### Contact Information:

Name: \_\_\_\_\_

Company Name: \_\_\_\_\_

Phone #: (       ) \_\_\_\_\_

Number of Participants: \_\_\_\_\_

### Class of Interest:

8D :

Six Sigma Green Belt:

ISO 9001:2000:

FMEA:

QFD:

APQP:

Six Sigma Black Belt:

Other:

Fax: **1-313-565-4895**